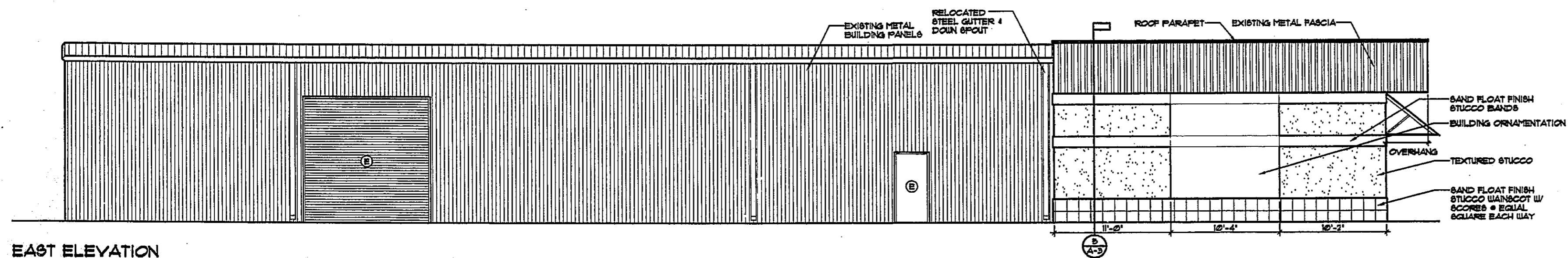
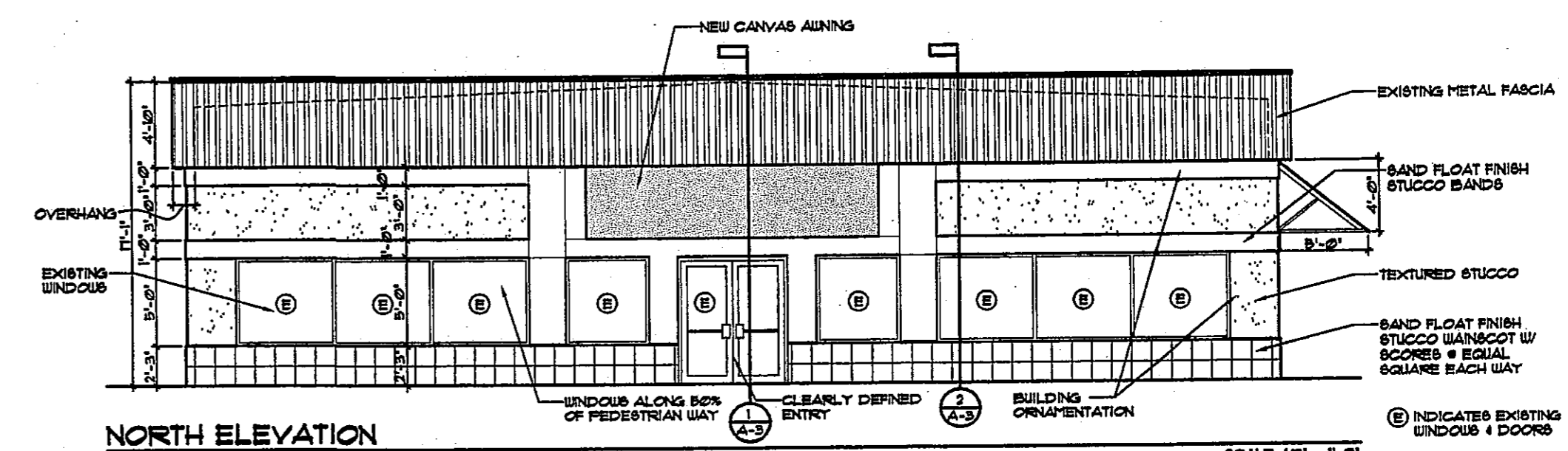


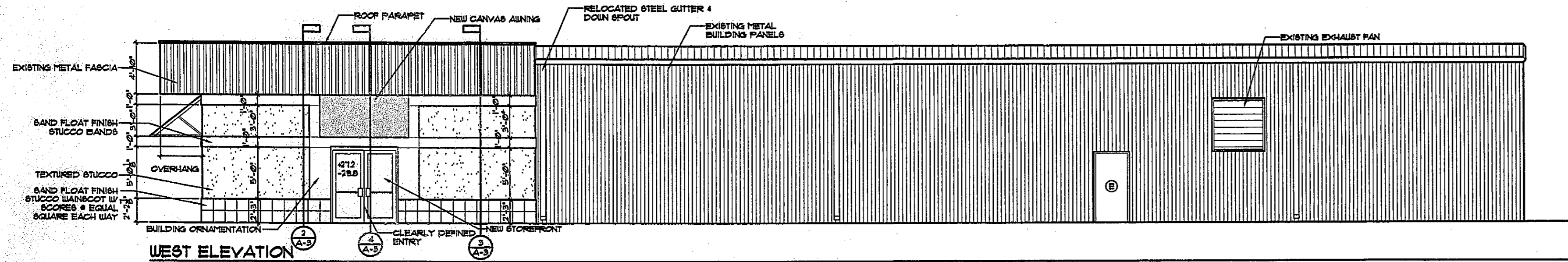
PROJ. NO. 2007-10
DRAWN A. LA SFIA
DATE 9/6/07
CHECKED J.P.T.
REVISIONS
DATE BY



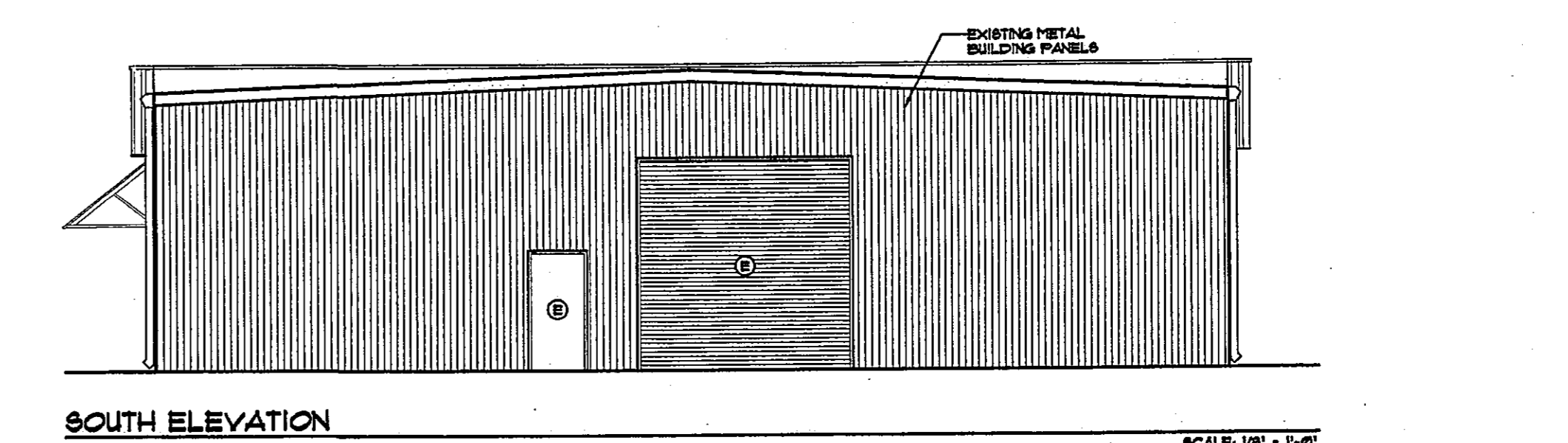
EAST ELEVATION



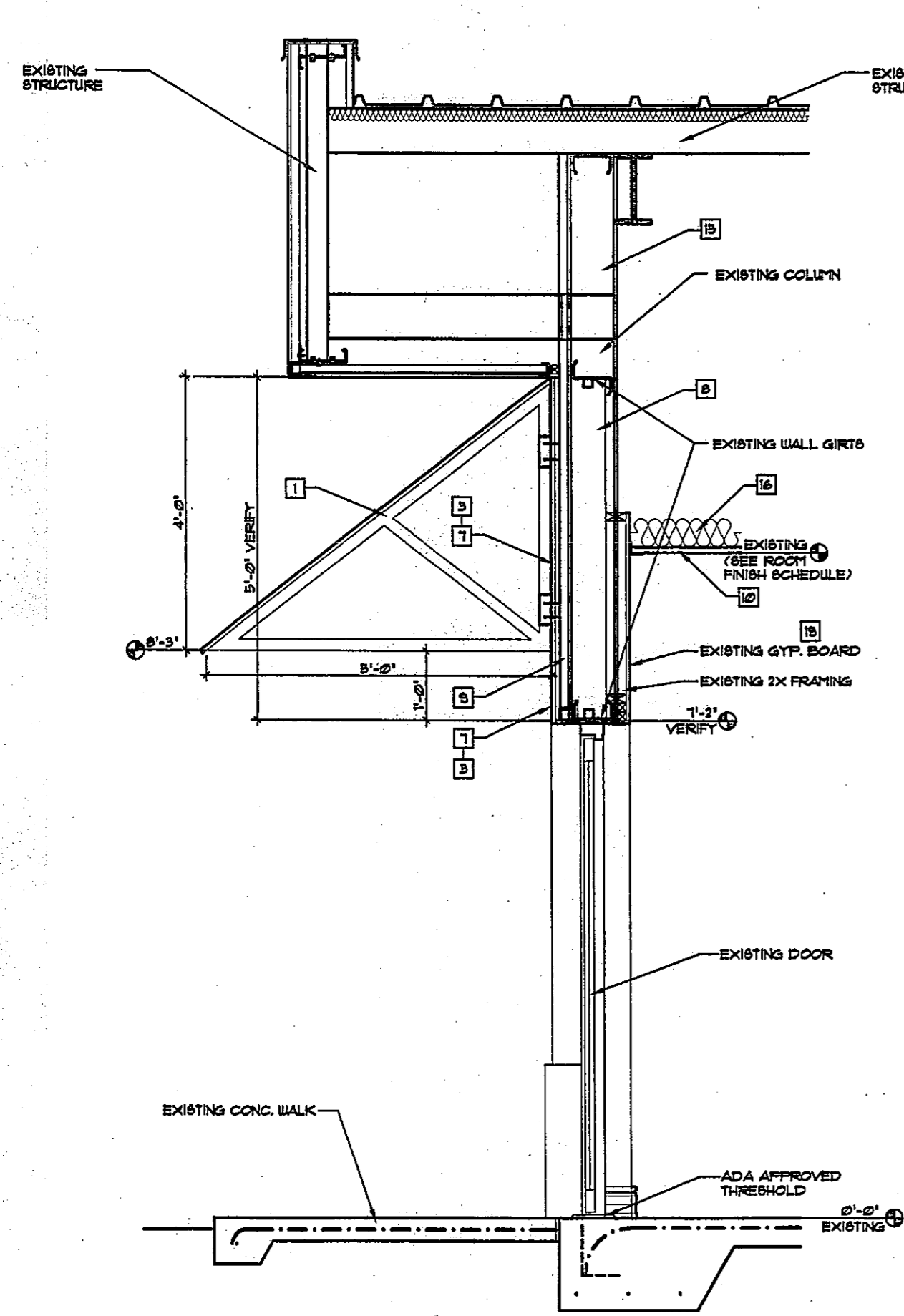
NORTH ELEVATION



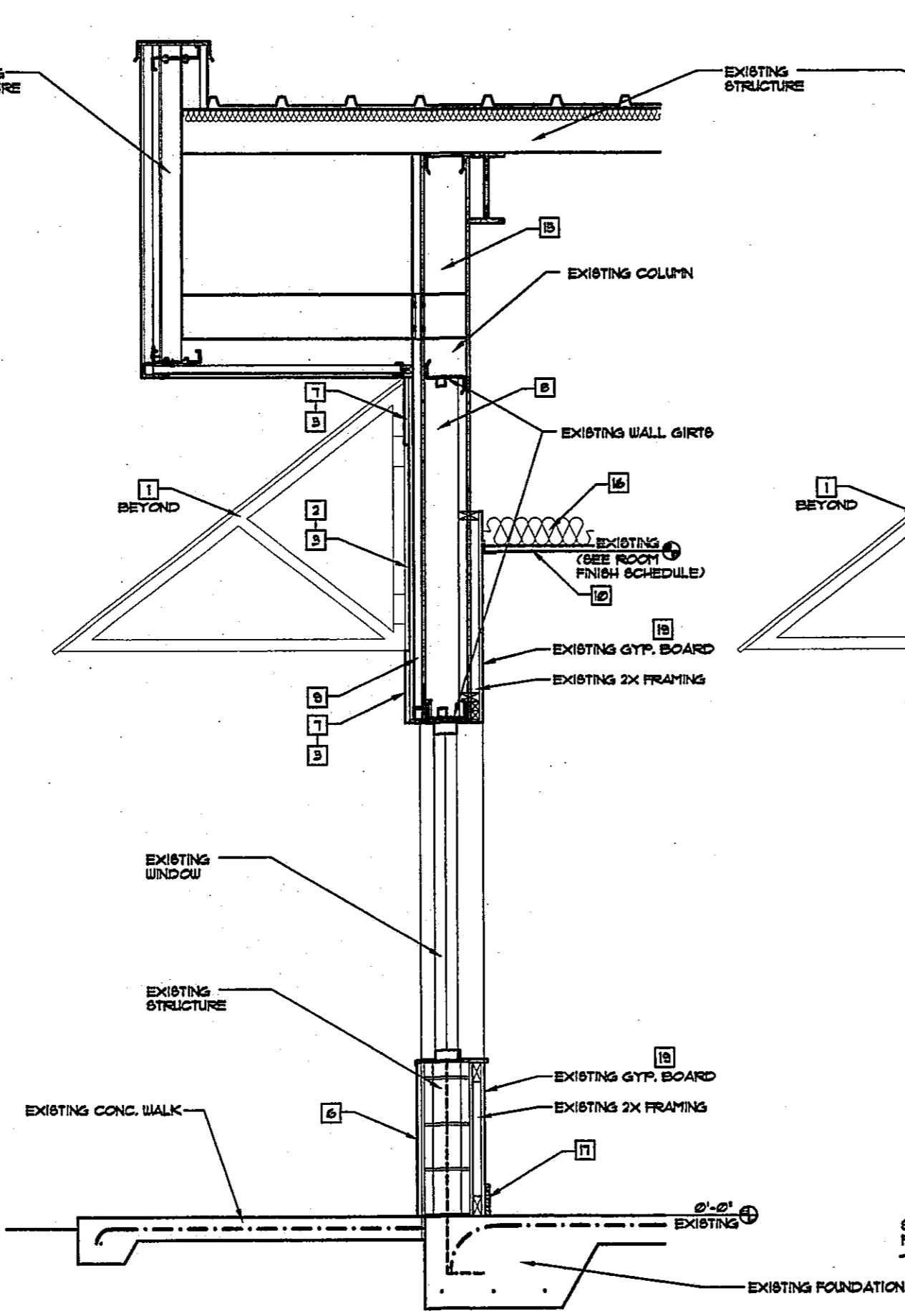
WEST ELEVATION



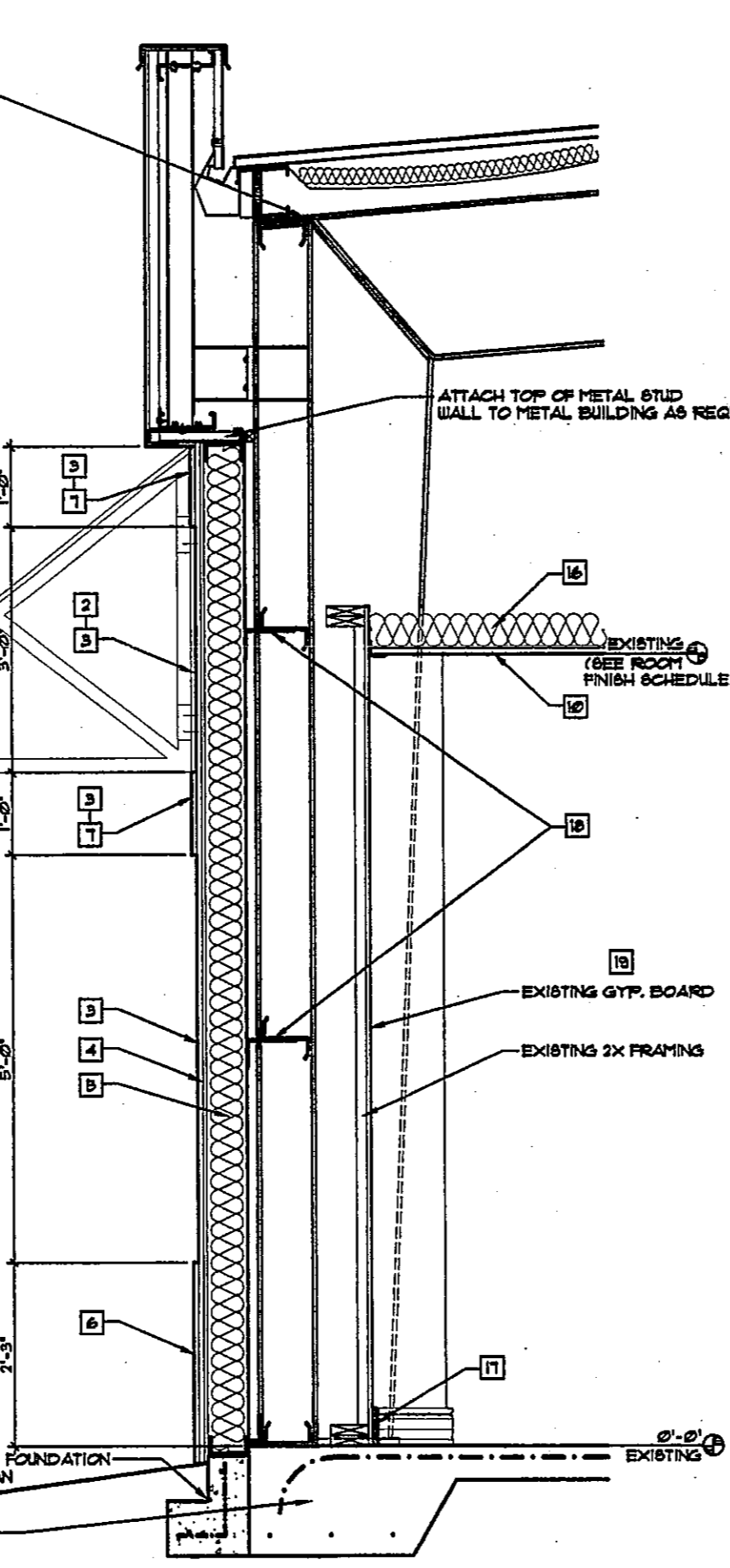
SOUTH ELEVATION



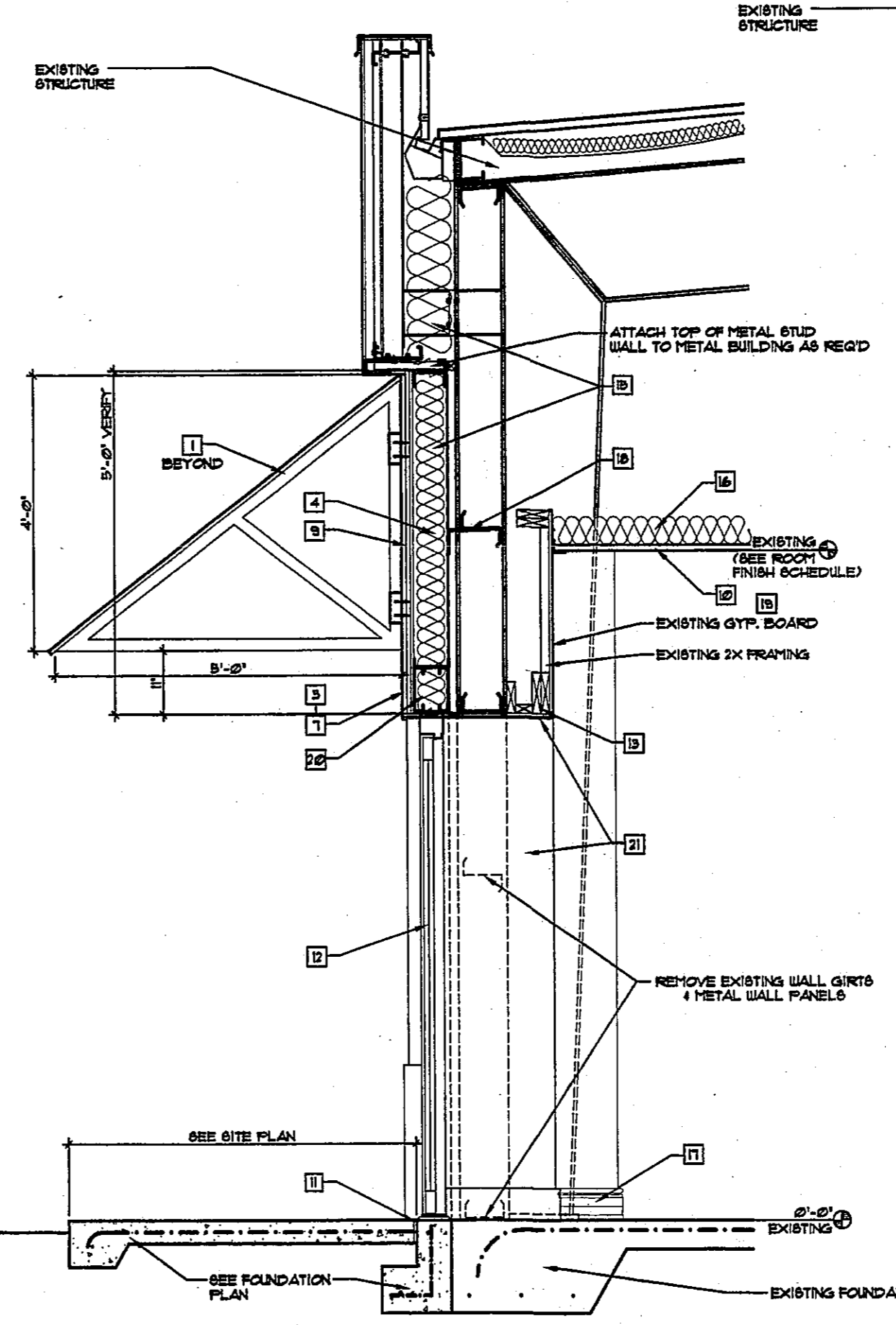
1 WALL SECTION
SCALE: 1/2" = 1'-0"



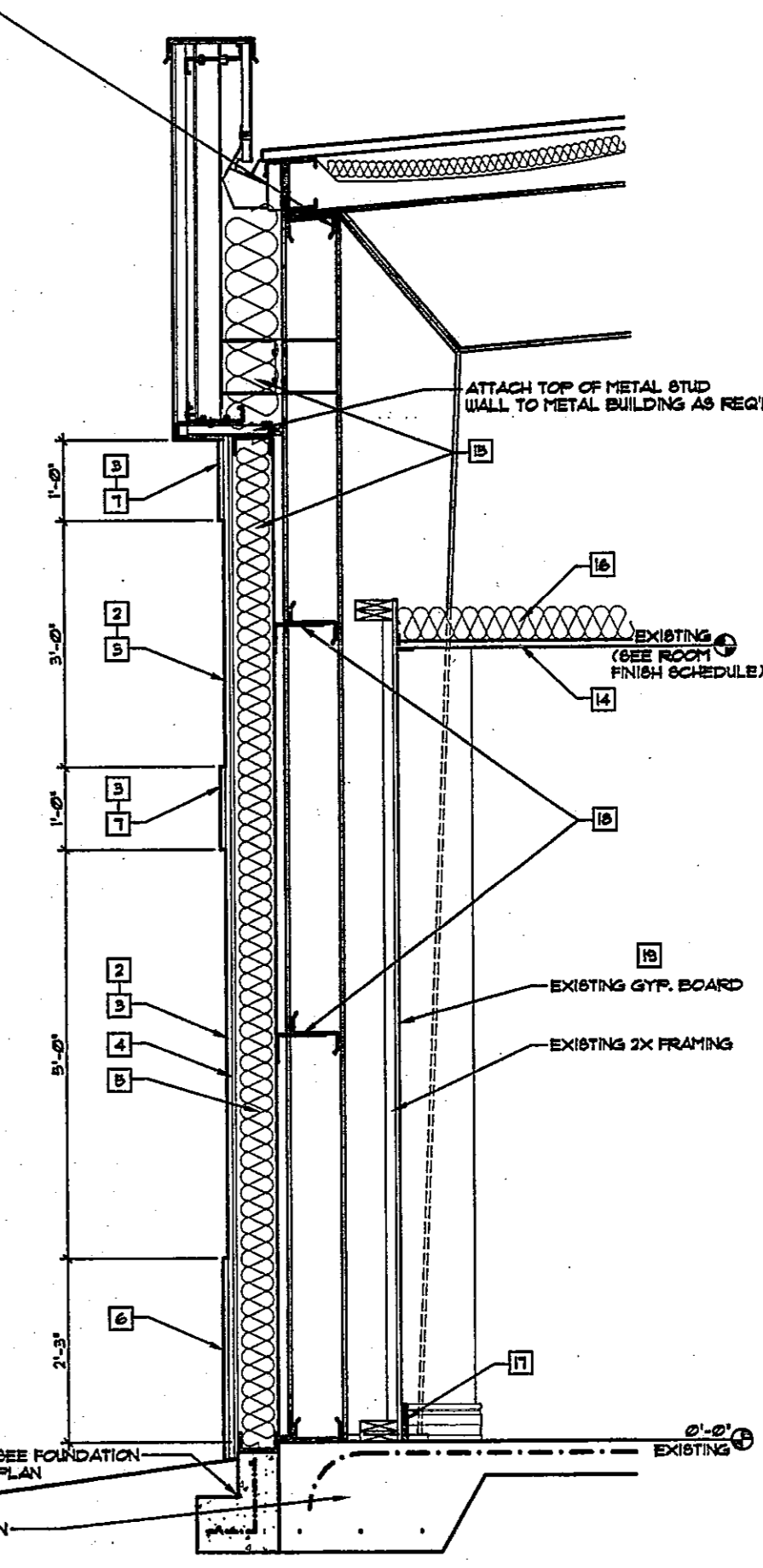
2 WALL SECTION
SCALE: 1/2" = 1'-0"



3 WALL SECTION
SCALE: 1/2" = 1'-0"



4 WALL SECTION
SCALE: 1/2" = 1'-0"



5 WALL SECTION
SCALE: 1/2" = 1'-0"

KEY NOTES

- 1 CANVAS AWNING CONSTRUCTION. TUBULAR ALUMINUM FRAME W/ FIRE RETARDANT CANVAS. DESIGNED & ENGINEERED FOR 150 MPH WINDSPEED. SECTION 1628 FBC 2004 W/ 2006 AMENDMENTS.
- 2 TEXTURED PAINTED, LIGHT SKIP TROUCEL STUCCO.
- 3 3/4" MIN. STUCCO ON PAPER BACKED METAL LATH.
- 4 1/2" DENS GLASS GOLD ATTACHED W/ 6d COMMON NAILS @ 4' O.C. @ PANEL EDGES & 6' O.C. @ INTERIOR.
- 5 6" 18 GAUGE METAL STUDS @ 16" O.C. POWER DRIVE INTO FOOTINGS @ 33' O.C.
- 6 SMOOTH PAINTED RAISED STUCCO WAINSCOT W/ CONTROL JOINTS & SCORES @ EQUAL SQUARE EACH WAY.
- 7 SMOOTH PAINTED STUCCO BAND.
- 8 6" 18 GA. METAL STUDS @ 16" O.C. BETWEEN WALL GIRTS TO SUPPORT EXTERIOR FINISHES. ATTACH TO GIRTS W/ 4"x4"x4 GA. CLIP ANGLE & ATTACH CLIP ANGLE TO GIRTS TO W/ POWER DRIVE FASTENER & TO STUDS W/ 3/8" TEK SCREWS.
- 9 EXISTING PRE-ENGINEERED METAL BUILDING PANELS TO REMAIN.
- 10 EXISTING CEILING GRID TO REMAIN. EXISTING CEILING TILES TO BE REPLACED.
- 11 1/2" FIBER EXPANSION MATERIAL.
- 12 INSTALL 3/8" UNIDIRECTIONAL DEBRIS IMPACT RESISTANT, TINTED GLASS ALUMINUM DOOR AND FRAME. AUTO CLOSER, ALUMINUM THRESHOLD & WEATHERSTRIP. STANDARD HARDWARE. CERTIFIED FOR 150 MPH WIND SPEED - REFER TO INSTALLATION DETAIL BY SUPPLIER. CAULK WATER TIGHT BEFORE STUCCO INSTALLATION. ATTACH FRAME TO METAL FRAMING W/ 3/8" DIA. x 3-1/2" TAPCONS (1-1/2" EMBED), 4' O.C. @ ENDS & 12' O.C. IN FIELD. UNLESS OTHERWISE NOTED BY STOREFRONT MANUFACTURING ENGINEER.
- 13 2x HEADER AS REQ'D.
- 14 DROP CEILING CONSTRUCTION. OWNER SELECT 2x4" LAY-IN CEILING TILE IN OWNER SELECT COLOR METAL GRID SYSTEM. R-18 BATT INSULATION THROUGHOUT.
- 15 R-18 BATT INSULATION.
- 16 R-18 BATT INSULATION.
- 17 NEW WOOD BASE (SEE SCHEDULE).
- 18 CUP METAL STUD WALL TO EXISTING STEEL GIRTS W/ 4"x4"x4 GA. CLIP ANGLE & ATTACH CLIP ANGLE TO GIRTS TO W/ POWER DRIVE FASTENER & TO STUDS W/ 3/8" TEK SCREWS.
- 19 REMOVE ANY EXISTING DETRACTED OR ROTTEN GYP. BOARD & REPLACE W/ NEW GYP. BOARD. TAPE & FLOAT, TEXTURE & PAINT.
- 20 (2) 6" 18 GA METAL STUD BOXED BEAM.
- 21 1/2" GYP BOARD, MATCH EXISTING.

BUILDING ALTERATIONS FOR
MOTOR SPORTS OF CAPE CORAL
CAPE CORAL, FLORIDA

JASON P. TRAMONTE
ARCHITECT
1625 S.E. 46TH STREET SUITE 2A CAPE CORAL, FLORIDA 33904
(239) 545-0997
AA 0002443

SHEET
A-3
OF 4 SHEETS

THIS BUILDING ALTERATION HAS BEEN DESIGNED IN ACCORDANCE WITH THE FLORIDA BUILDING CODE 2004 WITH 2006 AMENDMENTS, THE FLORIDA FIRE PREVENTION CODE 2004.
JASON P. TRAMONTE LIC. NO. AR0001489