

BUILDING ALTERATIONS FOR
 MOTOR SPORTS OF CAPE CORAL
 CAPE CORAL, FLORIDA

ROOM FINISH SCHEDULE									
ROOM TITLE	FLOOR	BASE	WALLS				CEILING	CLG. HT.	REMARKS
			NORTH	SOUTH	EAST	WEST			
SHOWROOM		CARPET	PAINTED GYP. BOARD EXPOSED STRUCT.	PAINTED GYP. BOARD EXPOSED STRUCT.	PAINTED GYP. BOARD EXPOSED STRUCT.	PAINTED GYP. BOARD EXPOSED STRUCT.	2 1/2" SUSP. ACCOBT. OPEN STRUCT. EXISTING CEILING GRID	11'-0"	REPLACE CEILING TILE
M1 OFFICE #1		WALL CLAD.	PAINTED GYP. BOARD EXPOSED STRUCT.	PAINTED GYP. BOARD EXPOSED STRUCT.	PAINTED GYP. BOARD EXPOSED STRUCT.	PAINTED GYP. BOARD EXPOSED STRUCT.	2 1/2" SUSP. ACCOBT. OPEN STRUCT. EXISTING CEILING GRID	11'-0"	
M2 OFFICE #2		WALL CLAD.	PAINTED GYP. BOARD EXPOSED STRUCT.	PAINTED GYP. BOARD EXPOSED STRUCT.	PAINTED GYP. BOARD EXPOSED STRUCT.	PAINTED GYP. BOARD EXPOSED STRUCT.	2 1/2" SUSP. ACCOBT. OPEN STRUCT. EXISTING CEILING GRID	11'-0"	
SALE MANAGER		WALL CLAD.	PAINTED GYP. BOARD EXPOSED STRUCT.	PAINTED GYP. BOARD EXPOSED STRUCT.	PAINTED GYP. BOARD EXPOSED STRUCT.	PAINTED GYP. BOARD EXPOSED STRUCT.	2 1/2" SUSP. ACCOBT. OPEN STRUCT. EXISTING CEILING GRID	11'-0"	
H.C. #1		WALL CLAD.	PAINTED GYP. BOARD EXPOSED STRUCT.	PAINTED GYP. BOARD EXPOSED STRUCT.	PAINTED GYP. BOARD EXPOSED STRUCT.	PAINTED GYP. BOARD EXPOSED STRUCT.	2 1/2" SUSP. ACCOBT. OPEN STRUCT. EXISTING CEILING GRID	11'-0"	
CL.		WALL CLAD.	PAINTED GYP. BOARD EXPOSED STRUCT.	PAINTED GYP. BOARD EXPOSED STRUCT.	PAINTED GYP. BOARD EXPOSED STRUCT.	PAINTED GYP. BOARD EXPOSED STRUCT.	2 1/2" SUSP. ACCOBT. OPEN STRUCT. EXISTING CEILING GRID	11'-0"	
CONF.		WALL CLAD.	PAINTED GYP. BOARD EXPOSED STRUCT.	PAINTED GYP. BOARD EXPOSED STRUCT.	PAINTED GYP. BOARD EXPOSED STRUCT.	PAINTED GYP. BOARD EXPOSED STRUCT.	2 1/2" SUSP. ACCOBT. OPEN STRUCT. EXISTING CEILING GRID	11'-0"	
MEN		WALL CLAD.	PAINTED GYP. BOARD EXPOSED STRUCT.	PAINTED GYP. BOARD EXPOSED STRUCT.	PAINTED GYP. BOARD EXPOSED STRUCT.	PAINTED GYP. BOARD EXPOSED STRUCT.	2 1/2" SUSP. ACCOBT. OPEN STRUCT. EXISTING CEILING GRID	11'-0"	
STORAGE		WALL CLAD.	PAINTED GYP. BOARD EXPOSED STRUCT.	PAINTED GYP. BOARD EXPOSED STRUCT.	PAINTED GYP. BOARD EXPOSED STRUCT.	PAINTED GYP. BOARD EXPOSED STRUCT.	2 1/2" SUSP. ACCOBT. OPEN STRUCT. EXISTING CEILING GRID	11'-0"	
HALL		WALL CLAD.	PAINTED GYP. BOARD EXPOSED STRUCT.	PAINTED GYP. BOARD EXPOSED STRUCT.	PAINTED GYP. BOARD EXPOSED STRUCT.	PAINTED GYP. BOARD EXPOSED STRUCT.	2 1/2" SUSP. ACCOBT. OPEN STRUCT. EXISTING CEILING GRID	11'-0"	

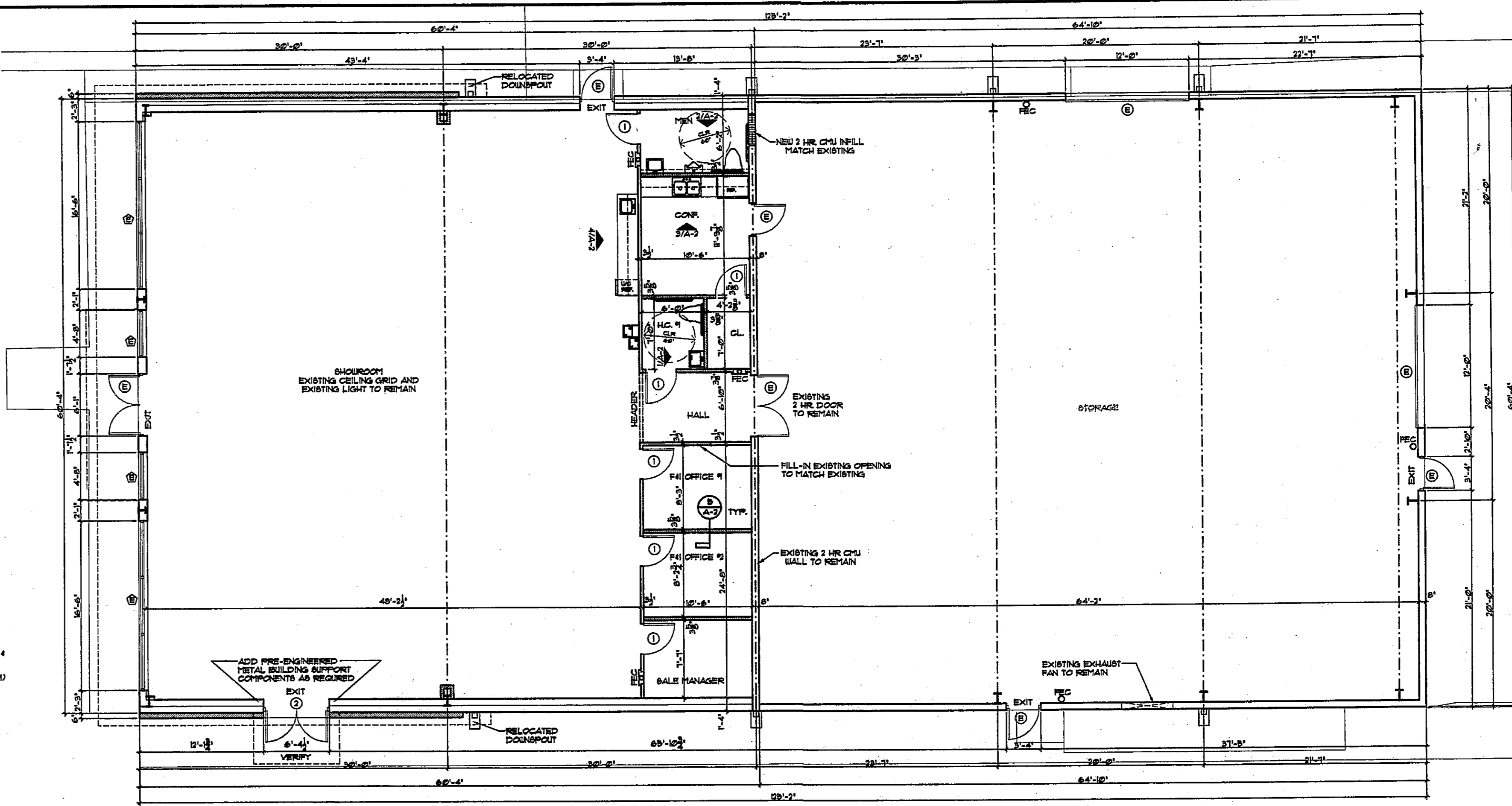
TAPE, FLOAT, SAND, TEXTURE & PAINT ALL GYP. BOARD WALLS. OWNER SHALL SELECT ALL COLORS, PATTERNS, TRIM & OTHER ITEMS REQUIRED FOR A COMPLETE PROJECT. ALL CHU WALLS SHALL HAVE 1/2" GYP. BOARD ON DO PT. FINISH IN AREAS THAT CALL FOR "PAINTED GYP. BOARD".

DOORS		FRAMES		DOOR/FRAME RATING	HARDWARE NO.	REMARKS	IMPACT RESISTANT GLASS
NK	SIZE	DESCRIPTION	TYPE				
1	3'-0" X 6'-8" X 1 3/4"	SOLID CORE FLUSH WOOD	1	AS REQUIRED	WOOD	COLOR TO BE SELECTED BY OWNER	NO
2	PR. 3'-0" X 7'-0" X 1 3/4"	ALUMINUM STOREFRONT	2	6'-4 1/2" X 7'-2 1/4" X 8' X 2 1/4"	ALUMINUM STOREFRONT	COLOR TO BE SELECTED BY OWNER	YES
3	EXISTING						

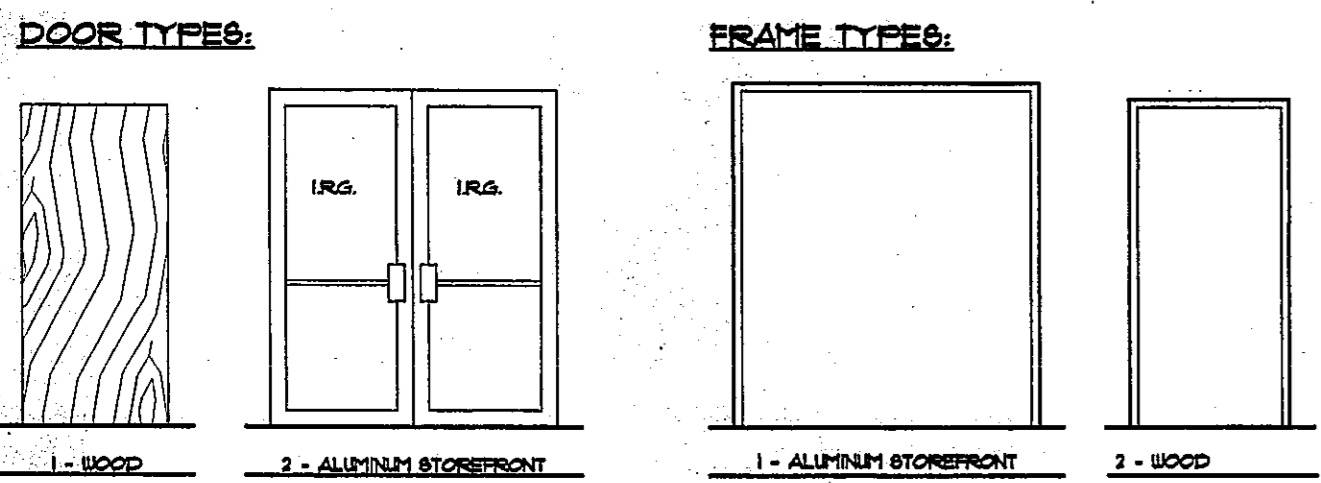
WOOD DOORS TO BE PAINT GRADE BIRCH. IRG. INDICATES IMPACT RESISTANT GLASS.

WINDOWS		DESCRIPTION	TYPE	REMARKS	IMPACT RESISTANT GLASS
NK	SIZE				
1	EXISTING				EXISTING

HARDWARE SCHEDULE: ALL KNOBS SHALL BE LEVERS
 1. STANDARD STOREFRONT HARDWARE, PULL, CLOSER, SEATHERSTRIPPING & TRINCHOLD, KEYED CYLINDER & THUMBTURN & 1 1/2 PR. HINGES
 2. 1 1/2 PR. HINGES, LOCKSET, STOP, (PRIVACY SET, CLOSER & MEN & H.C. #)

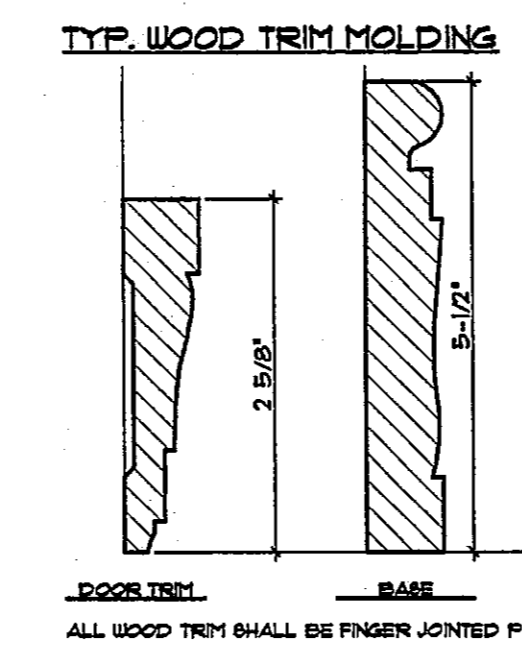
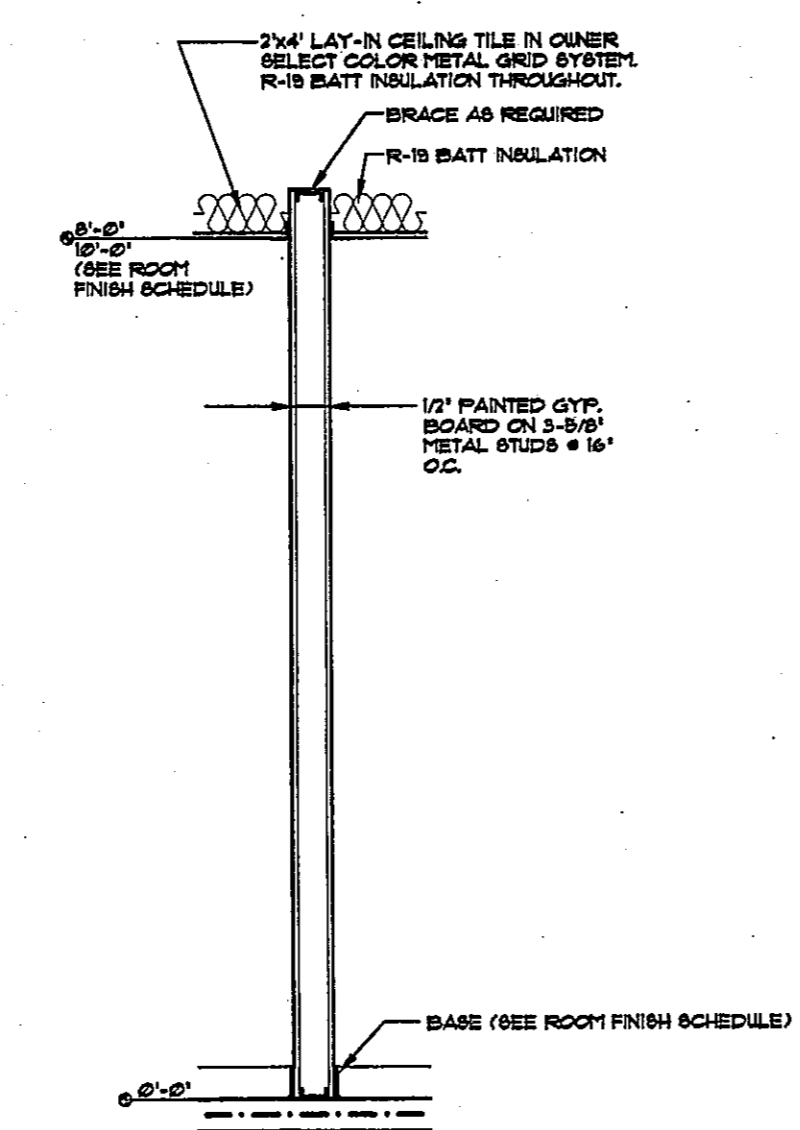
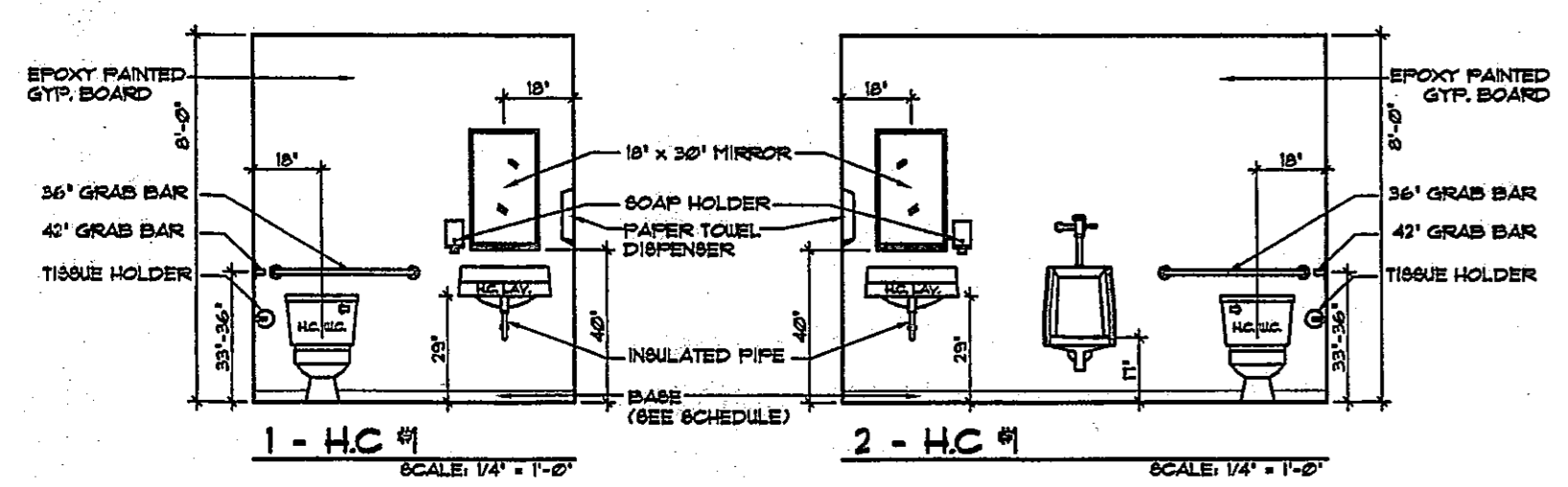


FLOOR PLAN

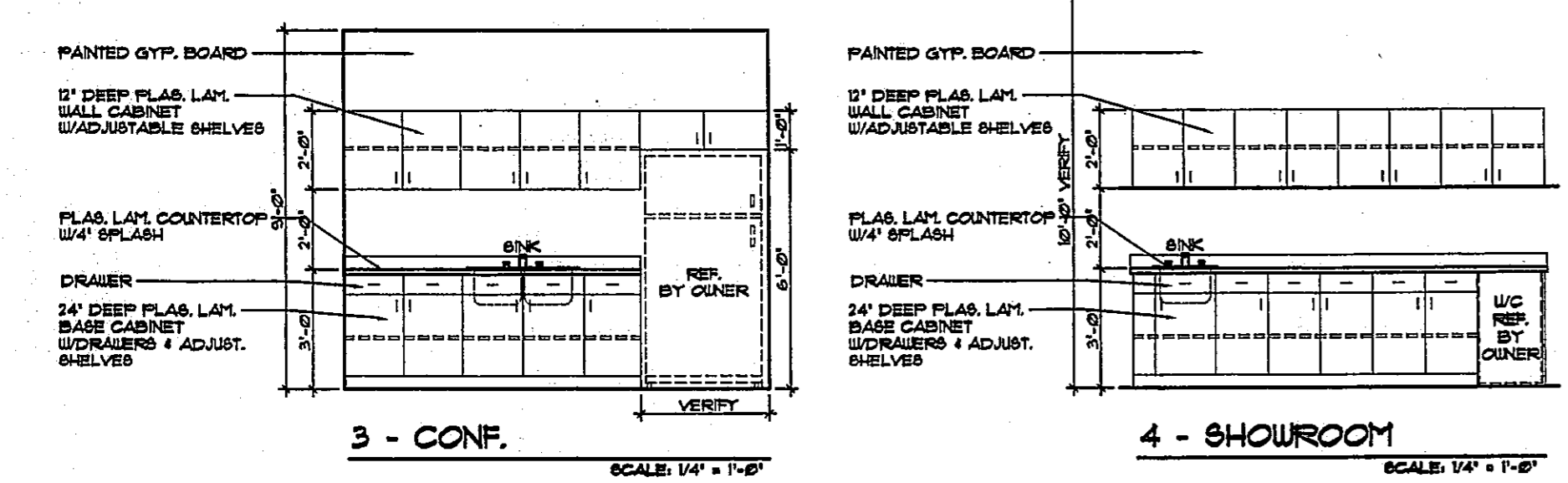


ROOM FINISH NOTES: COLORS SELECTED BY OWNER. INSTALL ALL PRODUCTS ACCORDING TO MANUFACTURER'S WRITTEN SPECIFICATIONS.
FLOORS:
 CARPET: GENERAL CONTRACTOR TO PROVIDE CARPET ALLOWANCE OF 13 PER SQ. YD. AT AREAS SPECIFIED TO RECEIVE CARPET. DIRECT GLEU DOWN INSTALLATION.
 VCT: 'ARISTON' STANDARD EDGE ON IMPERIAL TEXTURE MULTI-COLOR 12" X 12" GAGE 180 OR ARCHITECT APPROVED EQUAL. CLEANED POLISHED.
BASE:
 WOOD: WOOD BASE TO BE MIN. 1 1/2" HIGH COLONIAL WOOD BASE WITH PAINTED FINISH.
WALLS:
 PAINT: 2 COATS SATIN FINISH LATEX.
 EPOXY PAINT: 2 COATS NAME INSL-TILE LOW VOC, LOW ODOR EA-1010.
CEILING:
 SUSP. ACCOBT.: 'ARISTON' FINE FIGURED 24" X 48" X 1/4" LAY-IN 1 1/2" B'16" PRELUDE EXPOSED TEE GRID.

WALL LEGEND
 EXISTING WALLS TO REMAIN
 1 LAYER OF 1/2" GYP. BOARD ON EACH SIDE OF 3-3/8" OR 6" METAL STUDS (SEE PLAN WALLS & 16" O.C.)
 2 LAYER OF 1/2" GYP. BOARD ON EACH SIDE OF 3-3/8" OR 6" METAL STUDS (SEE PLAN WALLS & 16" O.C.)
 INDICATES (1) 2A 1600 FINE EXTINGUISHER ON HOOK
 2A1600 FINE EXTINGUISHER IN 60MIN-RECESSED CABINET



5 TYP. INTERIOR NON-RATED PARTITION
 A-2



THIS BUILDING ALTERATION HAS BEEN DESIGNED IN ACCORDANCE WITH THE FLORIDA BUILDING CODE 2004 WITH 2006 AMENDMENTS, THE FLORIDA FIRE PREVENTION CODE 2004.

JASON P. TRAMONTE LIC. NO. AR0001489

JASON P. TRAMONTE
 ARCHITECT
 1625 S.E. 46TH STREET SUITE 2A CAPE CORAL, FLORIDA 33904
 (239) 549-0991 AA 0002443