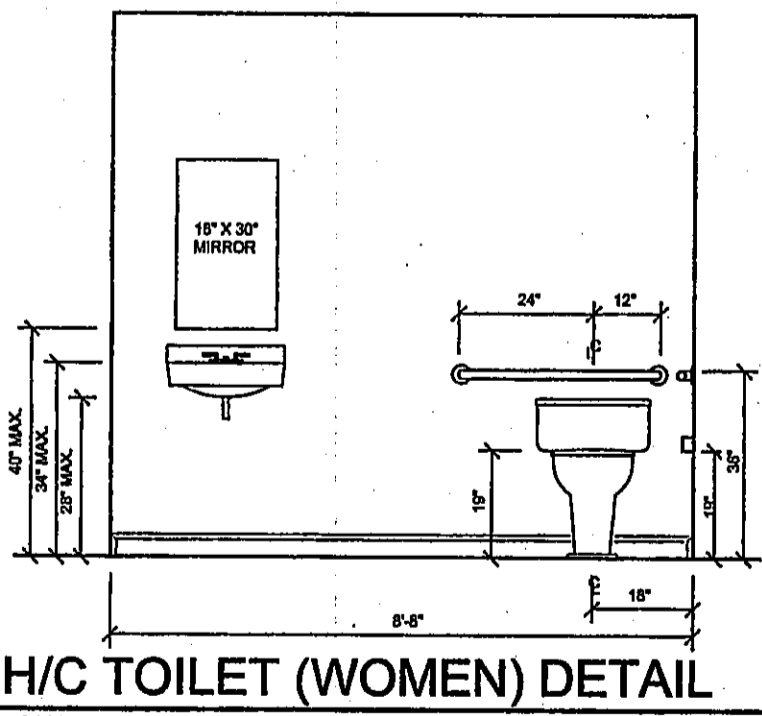


- KEYNOTES**
- EXISTING PAIR 3088 IMPACT RESISTANT TINTED GLASS STOREFRONT DOORS W/ AUTO CLOSER, THUMBTURN DEADBOLT & HIC ACCESSIBLE ALUMINUM THRESHOLD TO REMAIN.
 - INSTALL 3088 PAINTED, LEVER HANDLE, HOLLOW CORE WOOD DOOR & FRAME WITH PRIVACY LOCKSET AND AUTO CLOSER.
 - INSTALL PAIR 2'-0" (4'-0" TOTAL) WIDE BY 6'-0" HIGH 8-FOLD WOOD DOORS WITH ASSOCIATED TRACK AND HARDWARE.
 - SIMILAR TO KEYNOTE #2, BUT WITH SOLID CORE WOOD DOOR WITH KEVED LEVER HANDLE LOCKSET.
 - SIMILAR TO KEYNOTE #2, BUT WITH PASSAGE HARDWARE.
 - EXISTING 3070 INSULATED, PAINTED STEEL DOOR AND FRAME W/ CRASH CHAIN, LEVER HANDLE LOCKSET THUMBTURN DEADBOLT & HIC ACCESSIBLE ALUMINUM THRESHOLD TO REMAIN.
 - EXISTING 12'-0" WIDE X 14'-0" HIGH PAINTED COILING STEEL DOOR & FRAME TO REMAIN.
 - EXISTING 6'-4" WIDE X 8'-2" HIGH, IMPACT RESISTANT, TINTED GLASS TO REMAIN.
 - INSTALL 4'-0" WIDE X 4'-0" HIGH (1) SECTION CLEAR FIXED TEMPERED GLASS IN WHITE ESP ALUMINUM FRAME. HEAD @ 6'-10" A.F.F.
 - HANDICAPPED ACCESSIBLE TOILET WITH TOILET PAPER DISPENSER - REFER TO SHEET P1 & ELEVATION AT THIS SHEET.
 - SIMILAR TO KEYNOTE #10, BUT NOT HANDICAP ACCESSIBLE - REFER TO SHEET P1.
 - HANDICAPPED ACCESSIBLE WALL HUNG LAVATORY WITH MIRROR, PAPER TOWEL AND SOAP DISPENSER. REFER TO SHEET P1 & TO ELEVATION AT THIS SHEET.
 - LAVATORY IN PLASTIC LAMINATE COUNTER TOP WITH BACKSPASH. PROVIDE FULL MIRROR, SOAP AND PAPER TOWEL DISPENSER/DISPOSAL. REFER TO SHEET P1.
 - 1-1/2" DIAMETER STAINLESS STEEL GRAB BARS - 36" LONG BEHIND TOILET AND 48" LONG TO SIDE. MOUNTED 39" A.F.F. TO CENTERLINE. REFER TO ELEVATION AT THIS SHEET. PROVIDE SUPPORT BLOCKING AS REQUIRED.
 - HANDICAP ACCESSIBLE URINAL - REFER TO SHEET P1.
 - UTILITY SINK - REFER TO SHEET P1.
 - DOUBLE COMPARTMENT STAINLESS STEEL SINK IN PLASTIC LAMINATE COUNTER - REFER TO SHEET P1.
 - DISHWASHER - REFER TO SHEET P1.
 - 36" WIDE REFRIGERATOR BY TENANT - REFER TO SHEET P1.
 - PLASTIC LAMINATE BASE CABINERY WITH PLASTIC LAMINATE UPPER CABINERY - SHOP DRAWINGS REQUIRED.
 - PROVIDE 1/2" PAINTED DRYWALL ON 1 X 3 P.T. WOOD FURRING AT 16" O.C. ON 1" THICK POLI FACED RIGID INSULATION THRU-OUT TO 10'-0" A.F.F.
 - PAINTED DRYWALL AND METAL STUD BOX-OUT AT METAL BUILDING STRUCTURE REQUIRED.
 - PROVIDE 2" METAL WALL FURRING AT 16" O.C. WITH 1/2" PAINTED DRYWALL AT LOCATION SHOWN ON PLAN.
 - INSTALL 2050 SOLID PLASTIC STALL PARTITION DOOR IN PLASTIC PARTITION SYSTEM.
 - EXISTING CONCRETE SLAB TO REMAIN (SAW CUT AS REQUIRED TO INSTALL PLUMBING).
 - NOT USED.
 - REFER TO FINISH SCHEDULE AT SHEET A1 FOR FINISH INFORMATION.
 - 1/2" PAINTED GYP. BOARD ON EACH SIDE OF 3/8" 26 GAGE METAL STUDS AT 16" O.C. WITH CONTINUOUS TOP AND BOTTOM CHANNELS SHOT TO SLAB AT 32" O.C. AND WITH R-11 BATT INSULATION THRU-OUT.
 - 1/2" PAINTED GYPSUM BOARD EACH SIDE OF 3/8" 26 GAGE METAL STUDS AT 16" O.C. WITH CONTINUOUS TOP CHANNEL, AND BOTTOM CHANNEL SHOT TO SLAB AT 32" O.C. R-11 BATT INSULATION THRU-OUT.
 - OWNER SELECT 2 X 4 LAY-IN CEILING TILE IN OWNER SELECT COLOR METAL GRID SYSTEM. R-19 BATT INSULATION THRU-OUT.
 - FULL HEIGHT SLAT BOARD FOR WALL DISPLAY SHELVING.
 - DISPLAY RACK BY TENANT (VERIFY LOCATIONS WITH FIRE INSPECTOR PRIOR TO PLACEMENT).
 - SIMILAR TO KEYNOTE #29, BUT 1/2" GYP. BOARD ONE SIDE ONLY AND WITH OUT INSULATION. TOP OF WALL @ RETAIL AREA = 11'-0" A.F.F. TOP OF WALL ELSEWHERE = 10'-0" A.F.F.
 - EXISTING SCREENED 3030 LOUVERED VENT TO REMAIN.



NOTES TO THE PLANS EXAMINER

THIS PROJECT IS AN 8000 SQUARE FOOT INTERIOR IMPROVEMENT (MERCANTILE / BUSINESS OCCUPANCY) TO AN EXISTING TYPE V, UNPROTECTED, SPRINKLERED, SINGLE STORY, MULTIPLE OCCUPANCY BUILDING. THIS COMPLIES WITH TABLE 500, 2001 IBC.

THIS PROJECT IS FULLY ACCESSIBLE TO THE PHYSICALLY HANDICAPPED.

THIS PROJECT HAS BEEN DESIGNED IN ACCORDANCE WITH 2001 IBC, IFC, FMC, 2000 LSC AS MODIFIED BY 2001 FFPC, 1998 NEC & 2001 FAC.

EXISTING BUILDING COMPLIES WITH TABLE 500 & 600, 2001 IBC. NO AREA OR GLAZING INCREASE TO BUILDING ENVELOPE.

THERE WILL BE NO HIGH PILED COMBUSTIBLE STOCK.

PROVIDE FIRE EXTINGUISHERS PER NFPA 10.

SHIPPING/RECEIVING AREA IS NOT REQUIRED TO BE FIRE SEPARATED FROM OFFICE AREAS (FULLY SPRINKLERED) PER 2000 NFPA 101, SECTION 8.4.1 (2).

FIRE SPRINKLER SYSTEM DESIGN & DETAIL BY OTHERS UNDER SEPARATE PERMIT.

THREE HOUR RATED CONSTRUCTION (UL DESIGN #1455) IS DETAILED AND CONSTRUCTED UNDER A SEPARATE INTERIOR IMPROVEMENT PERMIT (UNITS #11-12-13). REFER TO CONSTRUCTION DOCUMENTS.

GENERAL NOTES - LEE COUNTY

INDUSTRY STANDARDS: INDUSTRY STANDARDS SHALL HAVE THE SAME FORCE AND EFFECT ON PERFORMANCE OF WORK AS IF COPIED DIRECTLY INTO THE CONTRACT DOCUMENTS OR BOUND AND PUBLISHED THEREWITH. COMPLY WITH STANDARDS IN EFFECT AS OF DATE OF CONTRACT DOCUMENTS, UNLESS OTHERWISE NOTED OR REQUIRED BY GOVERNING AUTHORITIES.

CODES: ALL WORK SHALL CONFORM TO THE FOLLOWING CODES AND ORDINANCES:
NFPA 101, LIFE SAFETY CODE, 2000 EDITION
FLORIDA FIRE PREVENTION CODE, 2001 EDITION
FLORIDA BUILDING CODE, 2001 EDITION
FLORIDA MECHANICAL CODE, 2001 EDITION
FLORIDA PLUMBING CODE, 2001 EDITION
NATIONAL ELECTRICAL CODE, 1999 EDITION
FLORIDA ACCESSIBILITY CODE, 2001 EDITION

LOCAL CODES AND ORDINANCES WHERE APPLICABLE, FLOOD DAMAGE PREVENTION ORDINANCES

SUPERVISION AND CONTROL: THE ARCHITECT HAS NOT BEEN RETAINED, NOR IS RESPONSIBLE FOR THE FIELD SUPERVISION OR CONSTRUCTION ADMINISTRATION OF THIS PROJECT. THE GENERAL CONTRACTOR IS RESPONSIBLE FOR THE FIELD SUPERVISION, CONSTRUCTION ADMINISTRATION, REVIEW AND APPROVAL OF ALL SHOP DRAWINGS, VERIFICATION ON SITE OF ALL DIMENSIONS, AND STRICT COMPLIANCE WITH THESE CONSTRUCTION DOCUMENTS. THE GENERAL CONTRACTOR SHALL NOTIFY THE ARCHITECT IN WRITING WITHIN 10 DAYS OF RECEIPT OF CONSTRUCTION DOCUMENTS OF ANY ERROR OR OMISSION OF THE ARCHITECT.

THE GENERAL CONTRACTOR SHALL NOT DEVIATE FROM CONSTRUCTION DOCUMENTS OR MAKE SUBSTITUTES WITHOUT WRITTEN APPROVAL FROM THE ARCHITECT. THE GENERAL CONTRACTOR SHALL ASSURE A QUALIFIED CONSTRUCTION SUPERVISOR TO THE PROJECT, THE GENERAL CONTRACTOR AND HIS SUPERVISOR SHALL BE RESPONSIBLE FOR THE COORDINATION OF SURVEYING/RECORDING, INSPECTIONS AND TESTING, GENERAL INSTALLATION PROVISIONS, CUTTING AND PATCHING, AND CLEANUP/PROTECTING.

GENERAL INSTALLATION PROVISIONS: WELL IN ADVANCE OF EVERY MAJOR UNIT OF WORK WHICH REQUIRES COORDINATION AND INTERFACING WITH OTHER WORK, MEET AT PROJECT SITE WITH INSTALLER AND/OR REPRESENTATIVES OF MANUFACTURERS AND FABRICATORS WHO ARE INVOLVED IN OR EFFECTED BY THE UNIT OF WORK WHICH HAS PROCESSED OR WILL FOLLOW. RECORD DISCUSSIONS, COMPLY WITH MANUFACTURERS APPLICABLE INSTRUCTIONS AND RECOMMENDATIONS FOR INSTALLATION. INSPECT EACH ITEM OF MATERIALS OR EQUIPMENT IMMEDIATELY PRIOR TO INSTALLATION, AND REJECT DAMAGED OR DEFECTIVE ITEMS. PROVIDE ATTACHMENT AND CONNECTION DEVICES AND METHODS FOR SECURING WORK PROPERLY AS IT IS INSTALLED, TRUE TO LINE AND LEVEL, AND WITHIN RECOGNIZED INDUSTRY TOLERANCE. ALLOW FOR EXPANSION AND BUILDING MOVEMENTS, PROVIDE UNIFORM JOINT WIDTHS IN EXPOSED WORK, ORGANIZE FOR BEST VISUAL EFFECT.

RECHECK MEASUREMENTS AND DIMENSIONS OF THE WORK AS AN INTEGRAL STEP OF STARTING EACH INSTALLATION AND MAKING EACH PURCHASE OF EQUIPMENT.

INSTALL WORK DURING CONDITIONS OF TEMPERATURE, HUMIDITY, EXPOSURE, FORECASTED WEATHER, AND STATUS OF PROJECT COMPLETION WHICH WILL ENSURE BEST POSSIBLE RESULTS FOR EACH UNIT OF WORK, IN COORDINATION WITH THE ENTIRE WORK.

ISOLATE EACH UNIT OF WORK FROM NON-COMPATIBLE WORK, AS REQUIRED TO PREVENT DETERIORATION.

COORDINATE ENCLOSURE (CLOSING) OF WORK WITH REQUIRED INSPECTIONS AND TESTS, SO AS TO MINIMIZE THE NECESSITY OF UNCOVERING WORK FOR THAT PURPOSE.

WHERE MOUNTING HEIGHTS AND LOCATIONS ARE NOT INDICATED, MOUNT INDIVIDUAL UNITS OF WORK AT INDUSTRY-RECOGNIZED STANDARD MOUNTING HEIGHTS (LOCATIONS) FOR APPLICATIONS INDICATED. REFER QUESTIONABLE CHOICES TO ARCHITECT/ENGINEER.

TEMPORARY FACILITIES: REFER TO THE 'GENERAL CONDITIONS OF THE CONTRACT OR CONSTRUCTION' FOR BASIC COMMITMENTS TO PROVIDE TEMPORARY FACILITIES. THE GENERAL CONTRACTOR SHALL PROVIDE THE FOLLOWING SERVICES AS REQUIRED TO PERFORM THE WORK.

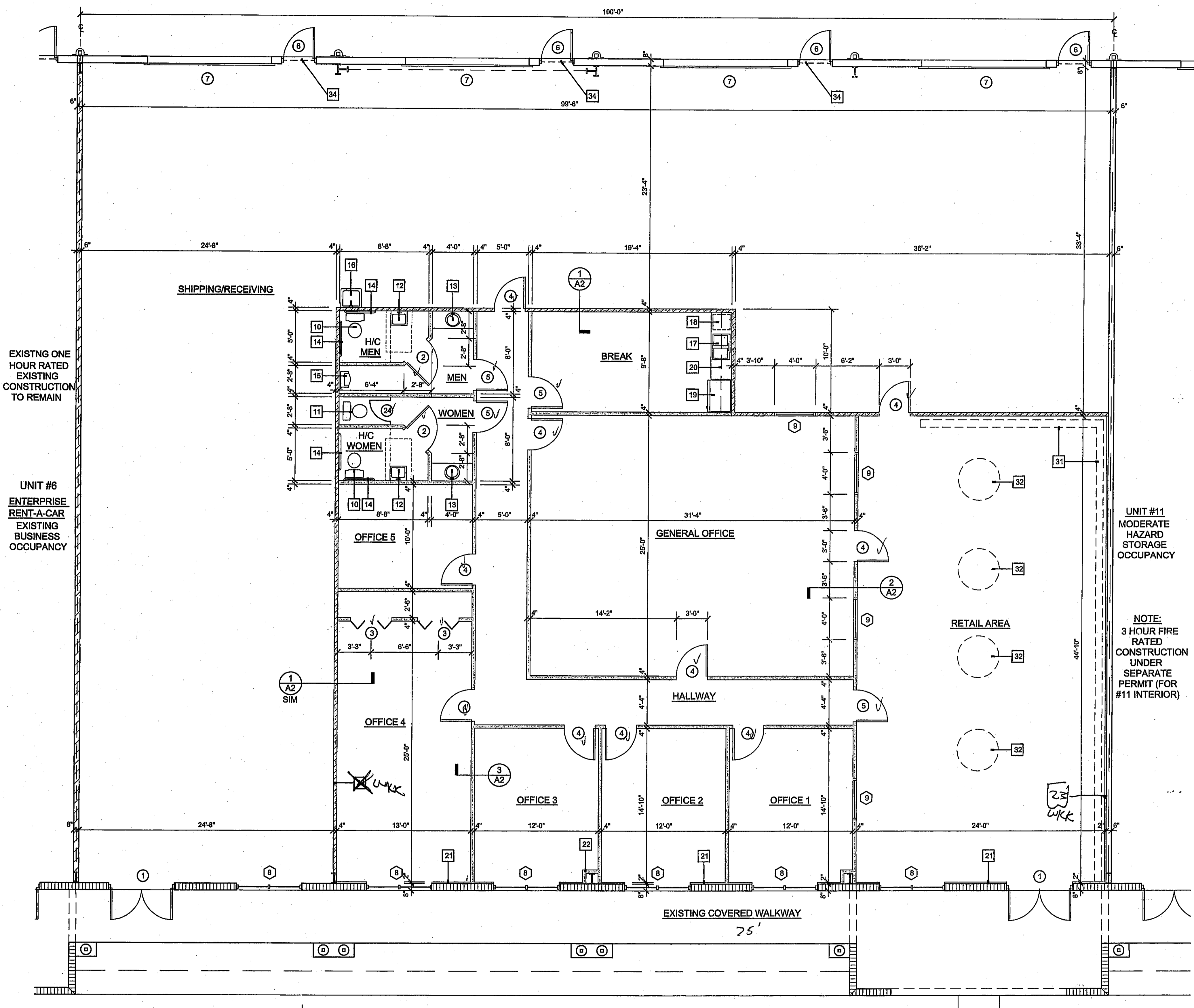
TEMPORARY UTILITY SERVICES: TEMPORARY CONSTRUCTION FACILITIES: WATER DISTRIBUTION, DRAINAGE, ENCLOSURE, POWER DISTRIBUTION, TEMPORARY LIGHTING, TEMPORARY ROADS, TEMPORARY ELEVATOR HOISTING, AND MISCELLANEOUS CONSTRUCTION FACILITIES.

TEMPORARY SUPPORT FACILITIES: CONTRACTORS FIELD OFFICE, DRINKING WATER, TOILETS, ETC. GENERAL CONTRACTOR SHALL PROVIDE PROJECT IDENTIFICATION SIGN (TO INCLUDE NAME OF PROJECT OWNER, CONTRACTOR, ARCHITECT, AND ADDITIONAL INFORMATION AS REQUESTED BY THE OWNER, CONTRACTOR SHALL SUBMIT LAYOUT FOR ARCHITECT'S APPROVAL PRIOR TO FABRICATION).

GENERAL: FIRE PROTECTION, BARRICADES, FENCING, LOCKUP AND SECURITY, SIDEWALK PROTECTION, WATCHMAN SERVICE (WHEN REQUIRED BY OWNER OR CONTRACTOR), ENVIRONMENTAL PROTECTION. REFER ALL PRODUCT SELECTIONS AND SUBSTITUTIONS TO THE OWNER FOR FINAL APPROVAL PRIOR TO ACTUAL PURCHASE OF MATERIALS.

WARRANTY AND GUARANTEE: ONE YEAR WRITTEN GUARANTEE IS REQUIRED ON ALL WORK UNDER THIS CONTRACT. SPECIFIC PRODUCT WARRANTIES WHERE THEY APPLY SHALL ACCRUE TO THE OWNER. PROVIDE WRITTEN STATEMENTS AND/OR COPIES OF ALL WARRANTY/GUARANTEE TO THE OWNER.

FINAL CLEANING: AT PROJECT CLOSEOUT TIME, CLEAN OR RECLEAN ENTIRE WORK TO NORMAL LEVEL, FOR 'FIRST CLASS' MAINTENANCE/CLEANING OR BUILDING PROJECTS OF SIMILAR NATURE. REMOVE NON-PERMANENT PROTECTIONS AND LABELS, POLISH GLASS, CLEAN EXPOSED SURFACES, TOUCH-UP MINOR DAMAGE, REPLACE FILTERS, REMOVE DEBRIS, REPLACE BURNED OUT LIGHTS, SWEEP AND WASH PAVED AREAS, POLICE YARDS AND GROUNDS AND SANITIZE PLUMBING.



NOTES/DIMENSION PLAN

WALL SYMBOL LEGEND

- EXISTING 6" CONCRETE MASONRY WALL CONSTRUCTION
- EXISTING METAL SIDING ABOVE 4 FOOT HIGH MASONRY SKIRT WALL
- EXISTING APPROVED ONE HOUR CONSTRUCTION UL SYSTEM #1455
- INTERIOR FRAME WALL TO 10'-0" A.F.F.
- PERIMETER INTERIOR FRAME WALL - 10'-0" OR 11'-0" A.F.F.
- 3 HOUR WALL CONSTRUCTION UL SYSTEM #1455 UNDER SEPARATE PERMIT

ROOM FINISH SCHEDULE

ROOM TITLE	FLOOR	BASE	WALLS	CEILING	CLG.HGT.	REMARKS
RETAIL AREA						CLASS "B" FINISHES REQUIRED
GENERAL OFFICE						ALL OWNER SELECT
OFFICE 1						
OFFICE 2						
OFFICE 3						
OFFICE 4						
OFFICE 5						
HALLWAY						
BREAK						
MEN						
WOMEN						
H/C MEN						
H/C WOMEN						
SHIPPING/RECEIVING						

BUILDING KEY PLAN

NO SCALE